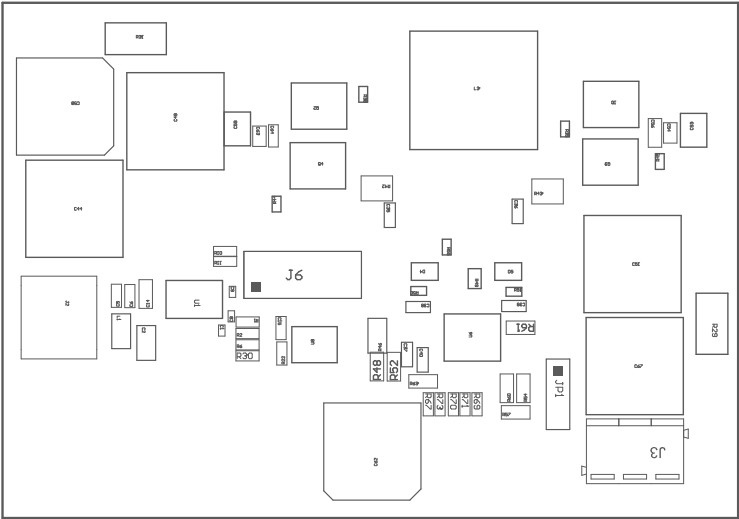
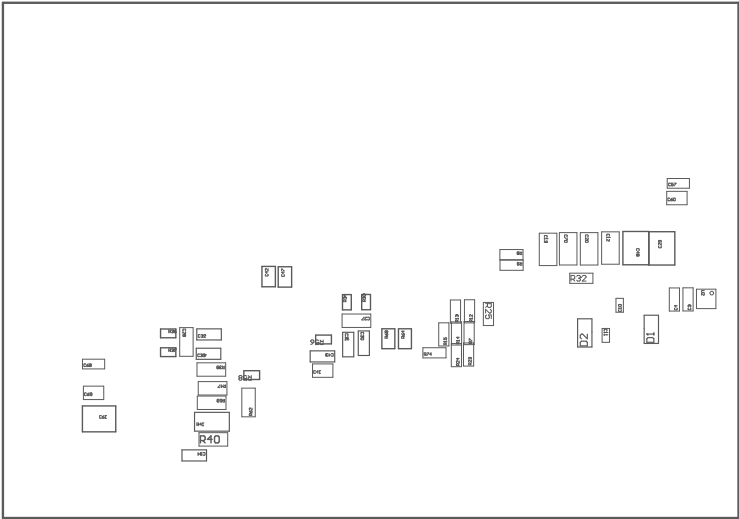


- 222
- 
- Overall Label 1x will be reserved for other third party. This shall be 8 or 10mm. Text shall be per the Label Table in the BOM spreadsheet.
- 223
- 
- These assemblies are ESD sensitive, ESD precautions shall be observed.
- 224
- 
- These assemblies must be clean and free from flux and all contaminants, use of no clean flux is not acceptable.
- 225
- 
- These assemblies must comply with environmental standards (IPC-A-610 Class 3, unless otherwise specified).





COMPONENTS MARKED "DWP" SHOULD NOT BE POPULATED.

REVISIONS: 1

REV

FOR REVIEW FROM BUTTER SIDE	REVISION NO.	DESCRIPTION	REV	ET	DATE REV	REV BY (VENDOR CONTROL)
FILE NAME: Revision: 1	REVISIONS: 1	8-5-2020	8-5-2020	8-5-2020	8-5-2020	8-5-2020